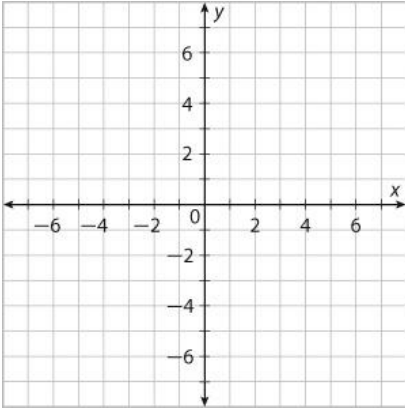
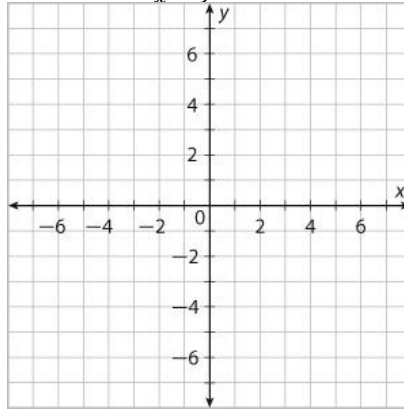


8.2 practice: Identify the holes, the asymptotes, x and y intercepts of each rational function. Then graph the function

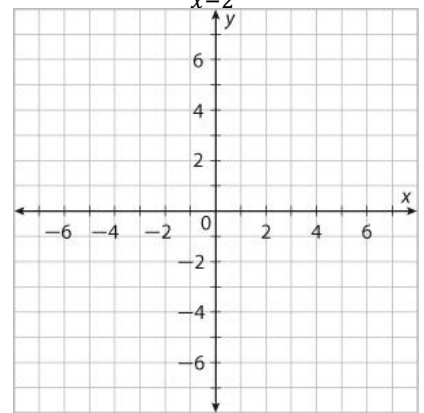
1) $f(x) = \frac{3x^2}{x^2-4}$



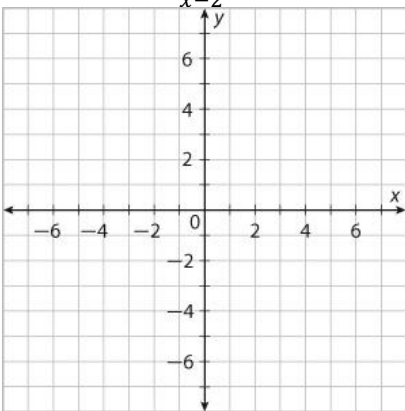
2) $f(x) = \frac{2x+7}{x^2-9}$



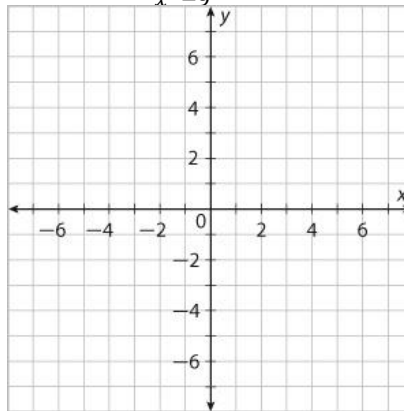
3) $f(x) = \frac{x^2-3x-4}{x-2}$



4) $f(x) = \frac{x^2-2x+1}{x-2}$



5) $f(x) = \frac{x^3}{x^2-9}$



6) $f(x) = \frac{x^2-x-6}{x^2-8x+15}$

